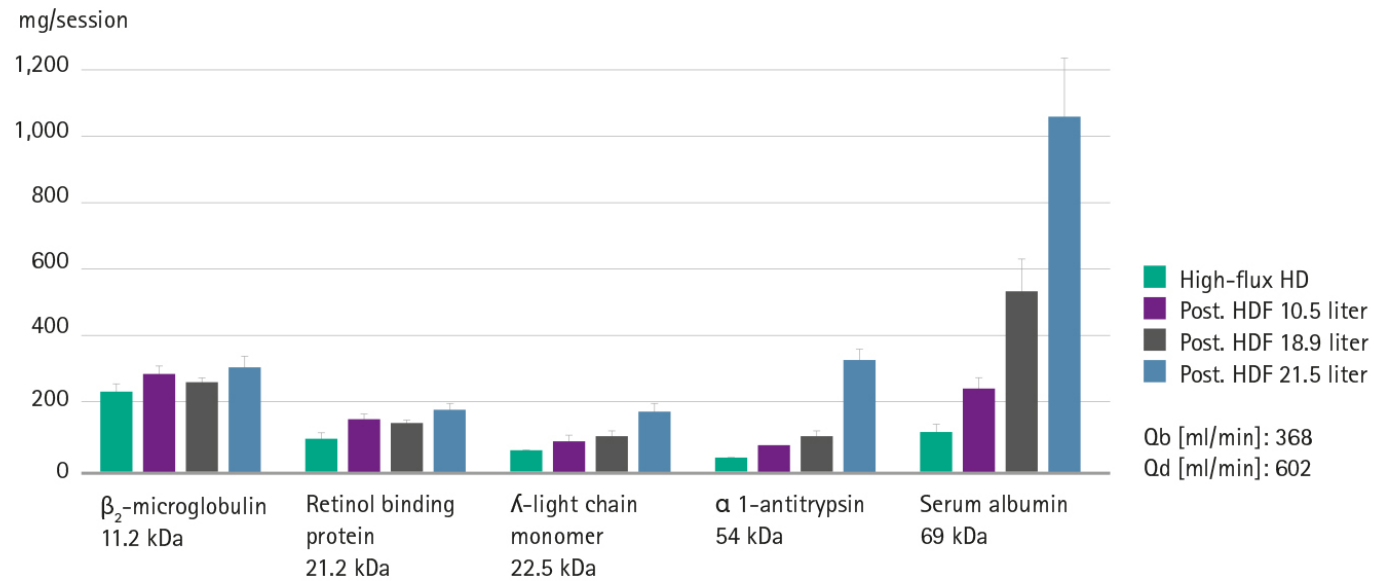


## ALBUMIN REMOVAL DURING HDF WITH XEVONTA HI 23<sup>3</sup>



Mode	Substitution volume [l]	Ultrafiltration volume [l]	Total convective volume [l]
High-flux HD	0.8 ± 0.2	2.8 ± 0.2	2.8 ± 0.2
HDF post dilution [10.5 l sub-vol]	10.5 ± 0.2	3.0 ± 0.1	13.5 ± 0.3
HDF post dilution [18.9 l sub-vol]	18.9 ± 0.4	2.8 ± 0.2	21.7 ± 0.4
HDF post dilution [21.5 l sub-vol]	21.5 ± 0.5	2.8 ± 0.1	24.3 ± 0.6